

County of Santa Clara

Department of Planning and Development
Planning Office
County Government Center, East Wing, 7th Floor
70 West Hedding Street
San Jose, California 95110-1705
(408) 299-5770 FAX (408) 288-9198
www.sccplanning.org



NOTICE OF PUBLIC HEARING REGARDING

PERMANENTE QUARRY/LEHIGH SOUTHWEST CEMENT COMPANY LEGAL NON-CONFORMING USE DETERMINATION

NOTICE IS HEREBY GIVEN that the County of Santa Clara Board of Supervisors has scheduled a public hearing at the meeting indicated below:

**County of Santa Clara Board of Supervisors
70 W. Hedding Street, East Wing, Board Chambers, 1st Floor, San Jose, CA 95110
Tuesday, February 8, 2011 at 1:30 p.m.
(or as soon thereafter on this date as the matter may be heard)**

Hearing is to consider whether and to what extent Heidelberg Cement, Incorporated (owner), Lehigh Southwest Cement Company (operator) of Permanente Quarry, has a legal non-conforming use(s) (also known as a "vested right") for surface mining on all parcels of land located in the unincorporated lands of County of Santa Clara owned by the company comprising a total of approximately 2,656 acres.

For reference: The vested right determination will not be a land use authorization. For any areas where legal non-conforming use(s) are determined by the Board to not exist, application(s) for Use Permit(s) would be required to be filed by the owner and would be processed along with two pending Reclamation Plan Amendments pending. Both Reclamation Plan Amendments are subject to CEQA and the preparation of Environmental Impact Reports.

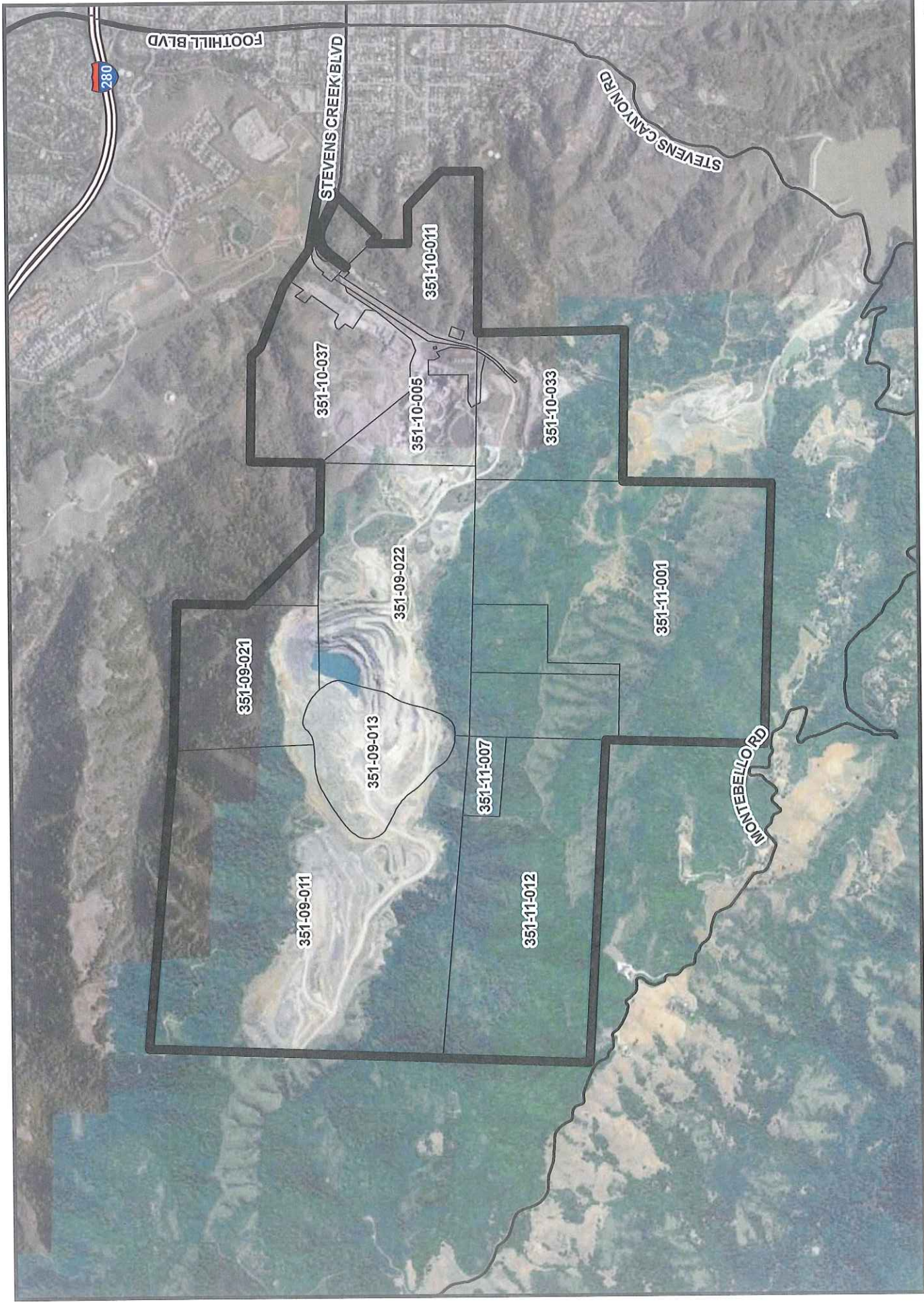
The quarry site is located in an unincorporated area of the western foothills of Santa Clara County near the City of Cupertino, 24001 Stevens Creek Boulevard, Cupertino, 95014, approximately 2 miles west of the intersection of Interstate 280 and Highway 85, Assessor Parcel Numbers: 351-09-011, -013, -020, -021, -022; 351-10-003, -004, -005, -006, -008, -010, -011, -012, -029, -033, -037, -038; 351-11-001, -005, -006, -007, -012; and 342-64-001; (File No. 2250-13-66-09P) (Supervisory District 5).

The final Draft Staff Report will be available on the County website on January 18, 2011 at: www.sccplanning.org.

FOR FURTHER INFORMATION relating to the proposal above, please contact: Marina Rush, Associate Planner, at (408) 299-5784 or via email at marina.rush@pln.sccgov.org.

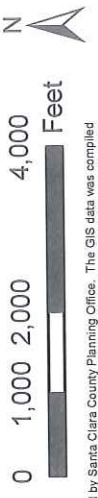
MICHAEL M. LOPEZ, PLANNING MANAGER
PLANNING AND DEVELOPMENT

Board of Supervisors: Mike Wasserman, George Shirakawa, Dave Cortese, Ken Yeager, Liz Kniss
County Executive: Jeffrey V. Smith



**Unincorporated Parcels for
Lehigh Cement - Permanent Quarry**

Parcels
 Project Boundary



This map created by Santa Clara County Planning Office. The GIS data was compiled from the Santa Clara County Assessor's Office. While deemed reliable, the Planning Office assumes no liability for errors or omissions. This map is based on the Official Record page 10 and Record of Survey 302353 recorded Jan 1944.