



Information Update – Health Risk Assessment

May 2, 2011

Lehigh's most recent Health Risk Assessment was submitted to the Bay Area Air Quality Management District (BAAQMD) on March 30th, 2011. This submission also included an analysis of previous emission data dating back to 2005. The information was derived using the most conservative methods.

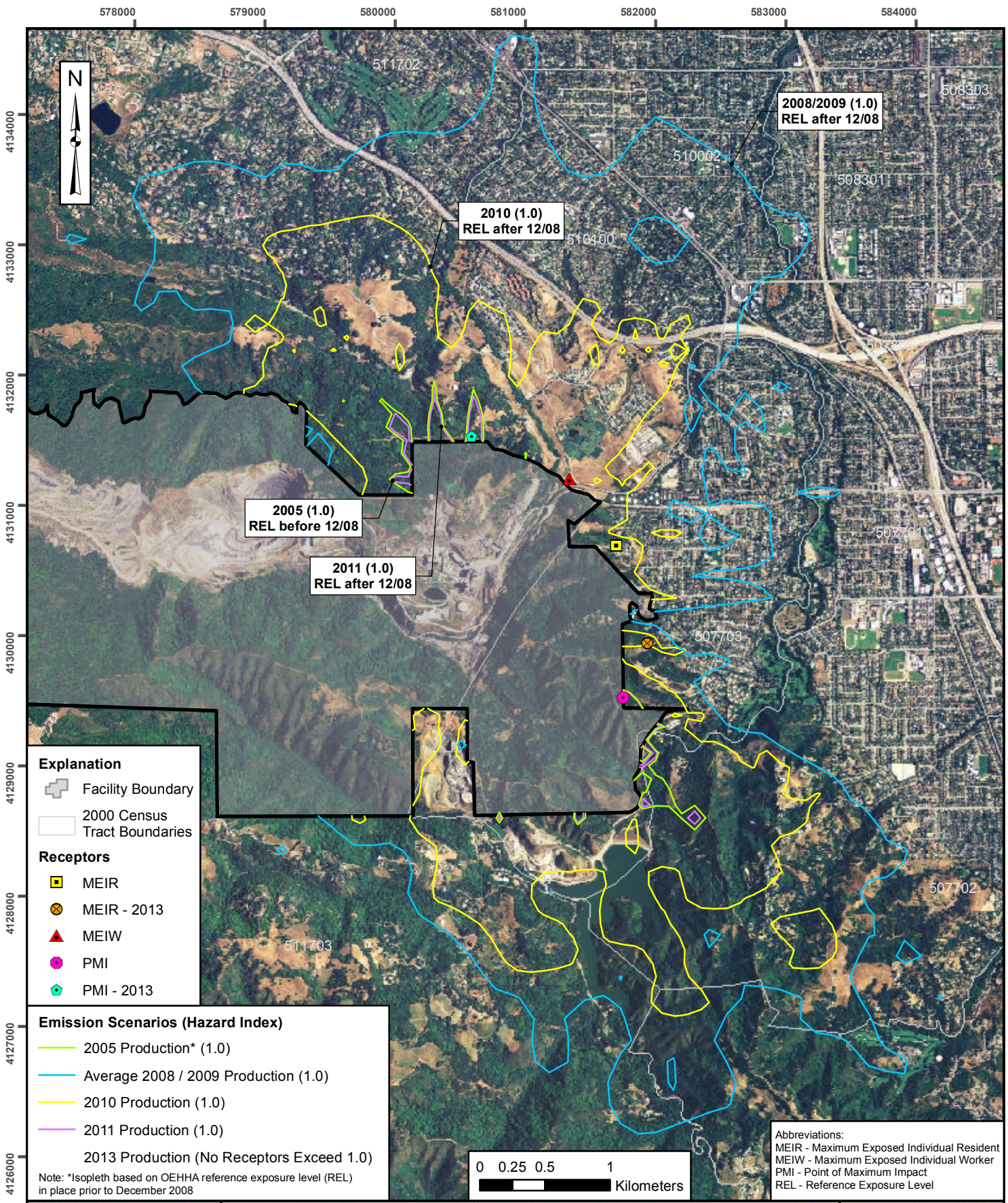
What you need to know

- Lehigh remains in compliance with the strictest air quality regulations in the United States and poses no significant health risk to its neighbors. The BAAQMD's most recent Health Risk Assessment (HRA) continues to show that our operations do not pose a significant health risk to the community.
- The air emissions testing requirements that are part of the EPA's Hot Spot initiative are based on an increasingly conservative assessment of risk. Lehigh supports this initiative and wants to point out that as air quality regulations become more stringent, we have always made the capital investment to stay ahead of or comply with new regulations.
- Lehigh continues to aggressively pursue the latest (and EPA approved) technologies to meet the latest standards set by regulatory agencies like the BAAQMD.
- The first phase of Lehigh's mercury reduction strategy safely removes mercury-laden dust from the cement making process and reduces annual mercury emissions by at least 30 percent. The second phase of Lehigh's environmental leadership strategy is underway and will include a pilot study with the installation of an Activated Carbon Injection (ACI) system, which will further reduce mercury emissions. This two-phased approach will reduce our mercury emissions by 90% and will enable Lehigh to meet the EPA's NESHAP standards long before the 2013 deadline.
- While retroactively applying these new Hot Spot standards to past emissions provides EPA with useful insights about future regulatory guidelines and requirements, our historical emissions have always been in line with current regulations. Further, we want to assure you that Lehigh currently meets the new more conservative standards adopted by BAAQMD. We are highly regulated by many federal, state and local agencies.

About the EPA's Hot Spots Initiative

- The Air Toxics "Hot Spots" Information and Assessment Act established a formal regulatory program for site-specific air toxics emissions inventory and health risk quantification that is managed by California air districts.
- The goals of the Air Toxics Hot Spots Program are to collect emissions data, to identify facilities with potential for localized health impacts, to ascertain health risks, to notify nearby residents of risks that are determined to warrant such notification, and to reduce significant risks.

###



Explanation

- Facility Boundary
- 2000 Census Tract Boundaries

Receptors

- MEIR
- MEIR - 2013
- MEIW
- PMI
- PMI - 2013

Emission Scenarios (Hazard Index)

- 2005 Production* (1.0)
- Average 2008 / 2009 Production (1.0)
- 2010 Production (1.0)
- 2011 Production (1.0)
- 2013 Production (No Receptors Exceed 1.0)

Note: *Isopleth based on OEHHA reference exposure level (REL) in place prior to December 2008

Abbreviations:
 MEIR - Maximum Exposed Individual Resident
 MEIW - Maximum Exposed Individual Worker
 PMI - Point of Maximum Impact
 REL - Reference Exposure Level

JOB NO.	0111910000
DESIGN:	SO
DRAWN:	AMEC GIS
DATE:	03/03/2011
SCALE:	1" = 2 km

Lehigh Southwest Company - Cupertino Facility

**Acute Noncarcinogenic Hazard Isopleths for
Developmental Health Effects within
3 Kilometers of the Facility**

**Figure
5A**

